

RallySchool - On Ice



Winter 2018

RallySchool - On Ice

The ultimate driving experience for you who dream about driving a 320 horsepower rally car! Our professional instructors will teach you how to control the car sideways the Scandinavian way! The goal for every participant is to learn as much as possible regardless of experience. You will learn how to control the car sideways with the throttel, how to pick the right line, braking technique, load change, steering technique, etc. Everybody will also get the chance to sit in the codriver seat with a professional rally driver on a rally stage. One important goal is of course to have a lot of fun with equally minded people!

Content:

- Rally tracks on frozen lakes.
- Professional instructors.
- Helmets to borrow.
- Rally car rental.
- Food and snacks
- Accomodation

Participants: 1-8 persons

Period: January-March

Location: Sweden, Björbo



RallySchool - On Ice

The cars

Subaru Impreza WRX STI -06
Engine: 2 liter, turbo, 320 hp
Transmission: 6 gear std, 4wd
Suspension: Öhlins
Chassi: Prodrive built, Gr N
Tiers: Rally tires with studs



Proto WRC
Engine: 2 liter, turbo, 300 hp
Gearbox: 6 gear std, 4WD
Suspension: Öhlins
Chassi: Dytko Sport built
Tiers: Rally tires with studs



Ford Fiesta Proto WRC



Citroen C3 Proto WRC



Volkswagen Polo Proto WRC

Partners

Skruvat.se



HALDA WATCH Co

1887

SWEDEN

RallySchool - On Ice

Specialevent

We can arrange special programs from one hour of driving up to a whole week. Send an email or give us a call and we will offer you a tailor-made event.

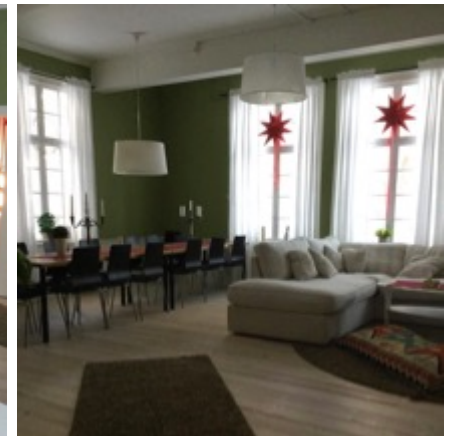


Instructors

Our instructors have a long experience from rallying on both national and international level. "Enthusiastic, pedagogic and positive" are common words used by our clients regarding the instructors.

Accommodation and food

Camp Race is located in the countryside 15 min from the tracks. We have a sauna and a rally lounge to relax in after driving. The food experience is important for us and we are using locally produced food.



Partners

Skruvat.se



HALDA WATCH Co

1887

SWEDEN

RallySchool - On Ice

Program, 1 day of driving

Day 1

18.30 Arrival at accomodation

19.30 Dinner and briefing about the driving

Day 2

07.30 Breakfast

08.15 Take off to the ice tracks

09.00 Driving on rally track

10.30 Coffee break

10.45 Driving on rally track

12.30 Lunch

13.15 Driving on rally track

14.30 Coffee break

16.00 Timed laps

17.00 Rally Codrive, ride with a pro

17.45 After rally in the pub

18.15 Sauna

20.00 Dinner and hand out of certificate

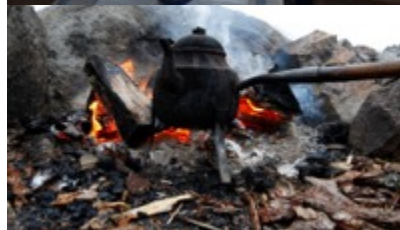
Day 3

08.00 Breakfast

09.00 Time to go home 🙄

Price: 24 000 SEK / person excl VAT

Everything in the programme is included.



Partners

Skruvat.se



HALDA WATCH Co

1887

SWEDEN

RallySchool - On Ice

Program, 2 days of driving

Day 1

- 18.30 Arrival at accomodation
- 19.30 Dinner and briefing about the driving

Day 2

- 07.30 Breakfast
- 08.15 Take off to the ice tracks
- 09.00 Driving sessions
- 10.30 Coffee break
- 10.45 Driving sessions
- 12.30 Lunch
- 13.15 Driving on rally track
- 14.30 Coffee break
- 14.45 Driving on rally track
- 17.00 Back to CampRace
- 18.00 Sauna
- 19.30 Dinner, briefing
- 21.00 "After Rally"

Price: 40 000 SEK / person excl VAT
Everything in the programme is included.

Day 3

- 07.30 Breakfast
- 08.15 Take off to the ice tracks
- 09.00 Driving on rally track
- 10.30 Coffee break
- 10.45 Driving on rally track
- 12.30 Lunch
- 13.15 Driving on rally track
- 14.30 Coffee break
- 16.00 Timed laps
- 17.00 Rally Codrive, ride with a pro
- 17.45 Back to Camp Race
- 18.15 Sauna
- 20.00 Dinner and hand out of certificate

Day 4

- 08.00 Breakfast
- 09.00 Time to go home 🙄



Partners

Skruvat.se



HALDA WATCH Co

1887

SWEDEN

RallySchool - On Ice



Airports
Borlänge 45 min by car to Björbo
Västerås 2 hours by car to Björbo
Stockholm, Arlanda 3 hours by car to Björbo

Partners

Skruvat.se



HALDA WATCH Co
1887
SWEDEN